



# 825-845 BROADWAY

CITY CENTER DOWNTOWN SAN DIEGO, 92101

Available for Lease  
.....  
**RETAIL/OFFICE  
OPPORTUNITY  
SUITES READY FOR  
OCCUPANCY**

**BUSTER HOY**  
(619) 489 5376  
buster.hoy@cast-cap.com  
CA License #02123670

**JOSH SIMMS**  
(619) 500-7473  
josh.simms@cast-cap.com  
CA License #02080261

**CAST**  
CAPITAL PARTNERS



## PROPERTY HIGHLIGHTS

- Ready for occupancy retail/office spaces on the prime corner of 9th Ave & Broadway - 11,100 ADT
- Located in the epicenter of growing Downtown, with over 1,500 units and 660,000 SF of office space within one block.
- Adjacent to Bosa's 620-unit development
- Centered at the intersection of the Gaslamp Quarter, Central Business District, East Village and Cortez Hill
- Surrounded by office, hotels, entertainment venues, and multifamily

## PROPERTY DETAILS



### Address

825-845 Broadway, San Diego, CA  
92101 SWC of Broadway & 9th Ave



### Size

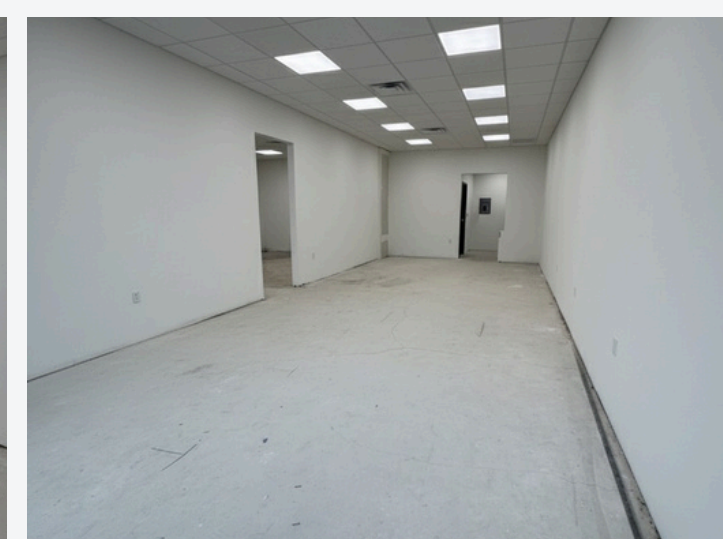
700 - 4,153 SF



### Lease Rate

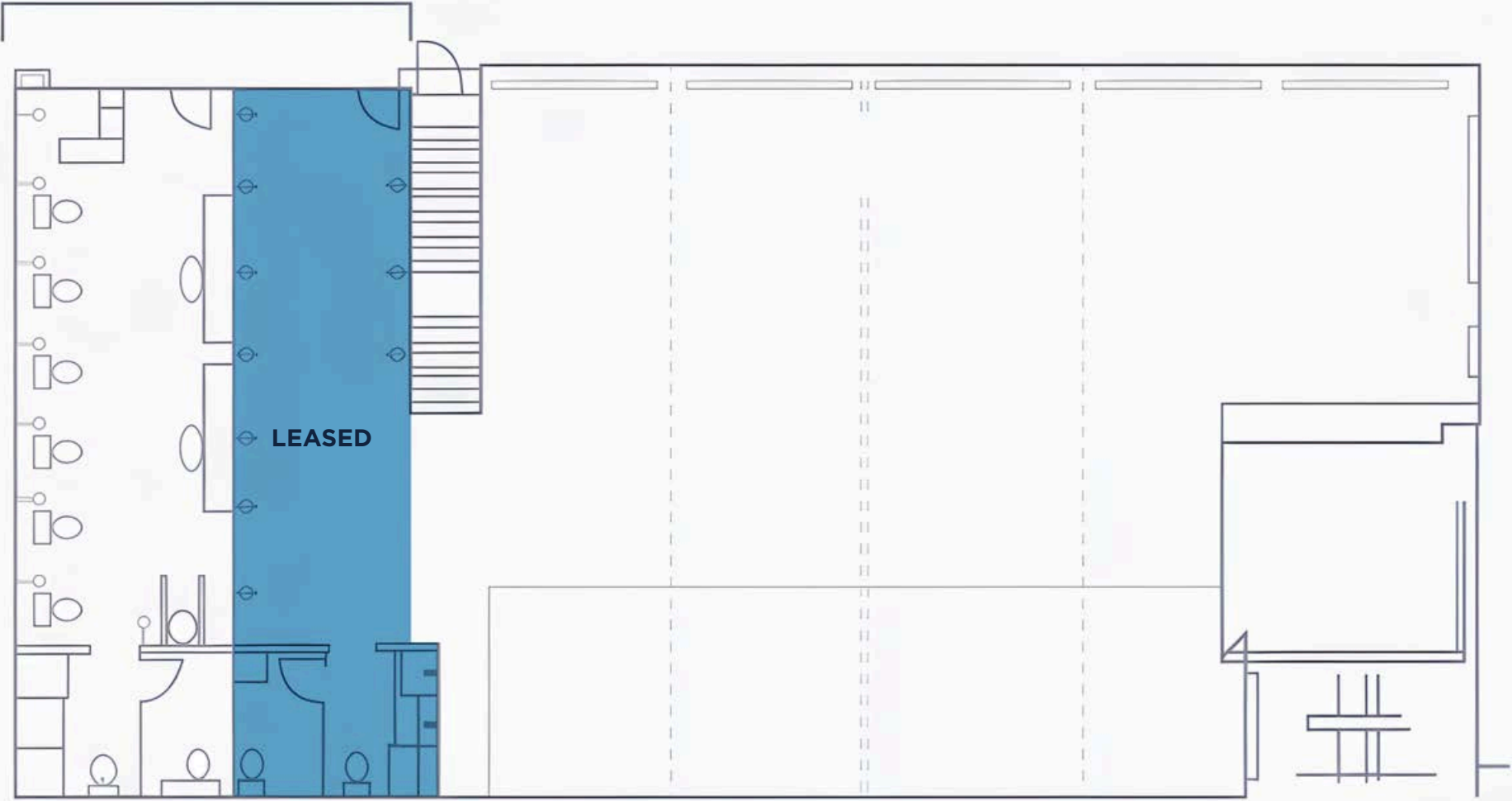
Contact Brokers!





# FLOOR PLAN

READY FOR OCCUPANCY:  
**700 - 4,153 SF**



SALON CONCEPTUAL DESIGN

----- POTENTIAL DEMISING WALLS

# THE LOCATION

## DISCOVER SAN DIEGO'S URBAN SIDE.

When the central library, ballpark village and Petco Park came about, there was a new vibrancy, focus and understanding that there is opportunity Downtown. 9th & Broadway's location in the city center makes it a great place to be as a resident as well as a visitor. Located moments from all of the distinct downtown communities - from Little Italy's thriving food scene to the cultural East Village to the happening Gaslamp District and the recreational waterfront- Broadway is the new city center.



# CITY VIEW



The planned growth of downtown will only boost its popularity among desirable American cities to live, work & play.

---

# Forbes

San Diego is becoming Southern California's coolest city.

---

# TRAVEL + LEISURE

# DOWNTOWN SAN DIEGO

The heartbeat of every city lives in its downtown, and San Diego is no exception. Located only minutes from the airport, San Diego's thriving urban center offers an abundance of options for accommodations, activities, dining and cultural attractions, all easily accessible by foot, bike, car or public transportation.

Where modern architecture and Victorian-Age buildings stand side-by-side, you'll discover eclectic galleries, chic boutiques, trendy nightclubs, rooftop bars, gastropubs, craft beer hangouts and fine dining restaurants lining the streets.

## DOWNTOWN EMPLOYERS

The city's tech scene is putting San Diego on a fast track toward new heights of success. These tech companies in downtown San Diego are making it all happen.

Procore Technologies

- Mitek Systems
- Classy
- GoFormz
- Flowmon Networks
- Jungo
- Certify
- Reflexion Health

# DEMOGRAPHICS



**2.1 M**  
Annual Petco  
Park Attendees



**\$1.3B**  
Convention Center  
Economic



**25M**  
Passengers Served  
Annual at SD  
Airport



**792,165**  
Annual Ferry &  
Cruise Passengers





# IN THE PATH OF DEVELOPMENT



RESIDENTIAL UNITS

**19,696**  
Existing



**9,562**  
U/C & Proposed

HOTEL ROOMS

**14,613**  
Existing



**1,962**  
U/C & Proposed



# CAST

CAPITAL PARTNERS

5090 Shoreham Place Suite 100  
San Diego, CA 92122  
information@cast-cap.com  
619-308-6680

[www.Cast-Cap.com](http://www.Cast-Cap.com)

## **BUSTER HOY**

(619) 489 5376

[buster.hoy@cast-cap.com](mailto:buster.hoy@cast-cap.com)

CA License #02123670

## **JOSH SIMMS**

(619) 500-7473

[josh.simms@cast-cap.com](mailto:josh.simms@cast-cap.com)

CA License #02080261

Copyright ©2025 CAST Capital Partners. All rights reserved. The information contained herein was obtained from sources deemed reliable. No warranties or representations, expressed or implied, are made as to the accuracy of the information contained herein, and same is submitted subject errors, omissions, change of price, rental or other conditions, withdrawal without notice, and to any special listing conditions imposed by our principals. This information is given with the understanding that all negotiations relating to the purchase, renting or leasing of the property described herein shall be conducted through CAST Capital Partners.